

DELTA SI2

SAFETY VALVE

The spring-loaded full-stroke safety valve APV SI2 is approved for use with fluids and gases. It is installed wherever vessels or tanks need to be safeguarded against excess pressure in the dairy, beverage and brewing industries, as well as in the chemical and pharmaceutical sectors.

CHARACTERISTIC

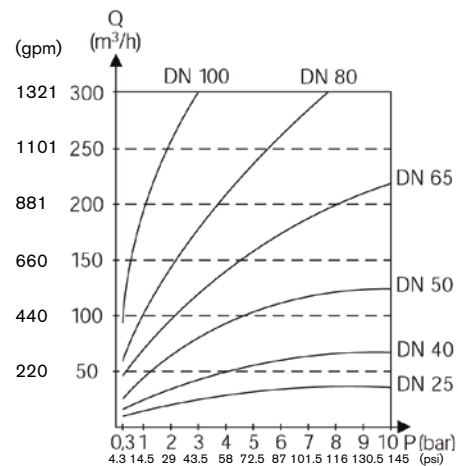
The TÜV-approved safety valve meets the requirements of the Pressure Equipment Directive 97/23/EU, succeeded the corresponding EU design audit and QS system investigations and complies with the respective AD2000 regulations. Moreover, the valves have a valid TÜV type-test approval mark.

FEATURES AND BENEFITS

- Surface roughness of the product-contact supply line is $Ra < 32 \mu\text{in}$ ($Ra < 0.8 \mu\text{m}$). Hygienic design
- Pneumatic seat lifter for easy and quick cleaning.
- Reconstruction from manual to pneumatic seat lifting is simply possible.
- Seat lifter can also be used for remote controlled function check. Valve position indication via proximity switch.
- Gasket replacement possible without removing the lead seal. No need to return the valve to the factory.
- Name plate stating TÜV type-test approval number with year, set pressure, etc.
- CIP nozzle is inside the CIP-cleaning adapter (option).
- Easy maintenance

OPTION

- Manual seat lifter



MEDIUM:

Water ($T = 68^\circ\text{F} / 20^\circ\text{C}$) type test approved in accordance with AD-2000 $\alpha = 0.49$. In case of fluids with densities other than that of water, the flow changes to be derived by the factor:

$$f = \sqrt{\frac{\rho(\text{water})}{\rho(\text{actual medium})}}$$

TECHNICAL DATA

Sizes	DN25 - 100
Product line pressure	145 psi (10 bar)
Product wetted parts	316L, 1.4404 (DIN EN 100888)
Max. temperature	EPDM / HNBR 275°F / 135°C (short time 284°F / 140°C) VMQ 275°F / 135°C not suited for hotwater and steam Option: FPM 275°F / 135°C steam-resistant
Control air pressure For seat lift cylinder	Min 87 psi (6 bar), Max 145 psi (10 bar)
Connecting flanges and valve housing	with 3.1.B certificate

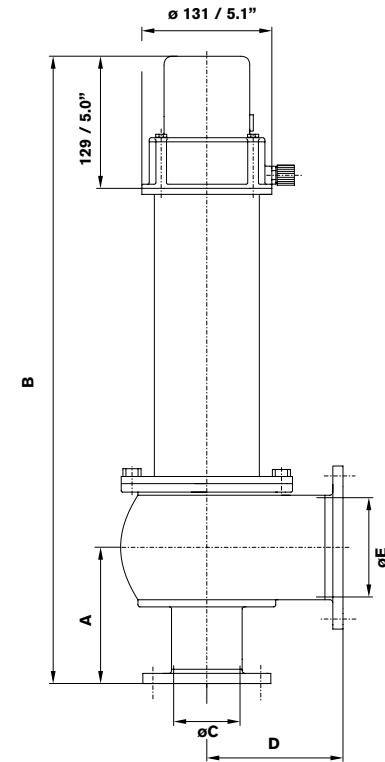
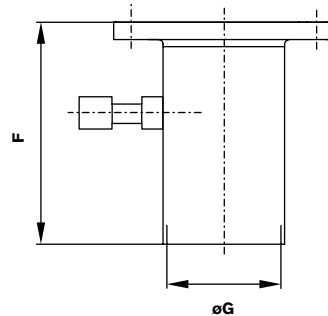
DIMENSIONS

Valve

DN	A in (mm)	B in (mm)	øC in (mm)	D in (mm)	øE in (mm)
25	3.8 (96)	18.4 (468)	1.0 (26)	3.8 (96)	1.9 (50)
40	4.3 (109)	20.9 (531)	1.5 (38)	4.3 (109)	2.6 (66)
50	4.8 (122)	21.6 (550)	1.9 (50)	4.8 (122)	3.2 (81)
65	5.3 (135)	24.5 (622)	2.6 (66)	5.3 (135)	3.9 (100)
80	6.1 (154)	27.4 (697)	3.2 (81)	6.2 (157)	4.9 (125)
100	6.8 (174)	28.7 (729)	3.9 (100)	6.9 (177)	5.9 (150)

CIP Cleaning Adapter

DN	F in (mm)	øG in (mm)
25	5.5 (140)	1.5 (38)
40	3.9 (99)	1.5 (38)
50	3.9 (99)	1.9 (50)
65	3.9 (99)	2.6 (66)
80	3.9 (99)	3.2 (81)
100	3.9 (99)	3.9 (100)



Based in Charlotte, North Carolina, SPX FLOW, Inc. (NYSE: FLOW) is a multi-industry manufacturing leader. For more information, please visit www.spxflow.com

SPXFLOW

SPX FLOW 611 Sugar Creek Road Delavan, WI 53115

P: (262) 728-1900 or (800) 252-5200 E: answers.us@spxflow.com

SPX FLOW, Inc. reserves the right to incorporate our latest design and material changes without notice or obligation.

Design features, materials of construction, dimensional data and certifications as described in this bulletin, are provided for your information only and should not be relied upon unless confirmed in writing. Please contact your local sales representative for product availability in your region. For more information visit www.spxflow.com.

The green "s" and "x" are trademarks of SPX FLOW, Inc.

APV-8014-US Version 04/2019

COPYRIGHT © 2019 SPX FLOW, Inc.