

Product Range

Gram Equipment Group

Freezers – continuous selfcontained

GIF 600 and 1200

- Plug-and-run. Easy to install and connect facilities.
- Flexible for positioning in the factory.
- Very low mix loss at start-up and stop.
- Superior and constant ice cream quality.



MF 50 and 75

- Laboratory freezers.
- Very low-capacity range.
- Minimum start-up mix consumption.



Model

GIF 600
GIF 1200
MF 50
MF 75

Capacity

120-600 l/h
300-1200 l/h
20-100 l/h
30-160 l/h

Freezers – external refrigeration

WS series

- Lowest Total Cost of Ownership in the market.
- Various energy saving features.
- Best in class ice cream quality.
- Well know robust design through 25 years of the WS series.
- HMI with highly illustrative and user-friendly design.

Option to configure for CREAM technology



Model	Capacity
WS 06	60-600 l/h
WS 10	100-1000 l/h
WS 15	150-1500 l/h
WS 25	200-2500 l/h
WS 32	300-3200 l/h
WS 45	400-4500 l/h

Ingredient Feeders

IF-P series

Compact versatile units.

Unique Piston pump design.

- Very low maintenance costs = lowest TCO.
- Class leading dosing precision.

Fully automatic control.

- Variable frequency control of auger, blender and pump motors.
- Automated loss-in-weight feed system.



Model

IF 2000
 IF 205P
 IF 410P
 IF 410PL(Large Hopper)
 IF 820P
 IF 1230P

Capacity

150-2000 l/h
 100-2000 l/h
 400-4000 l/h
 400-6000 l/h
 400-8000 l/h
 400-12000 l/h



CAF 24 & 36 filling machines

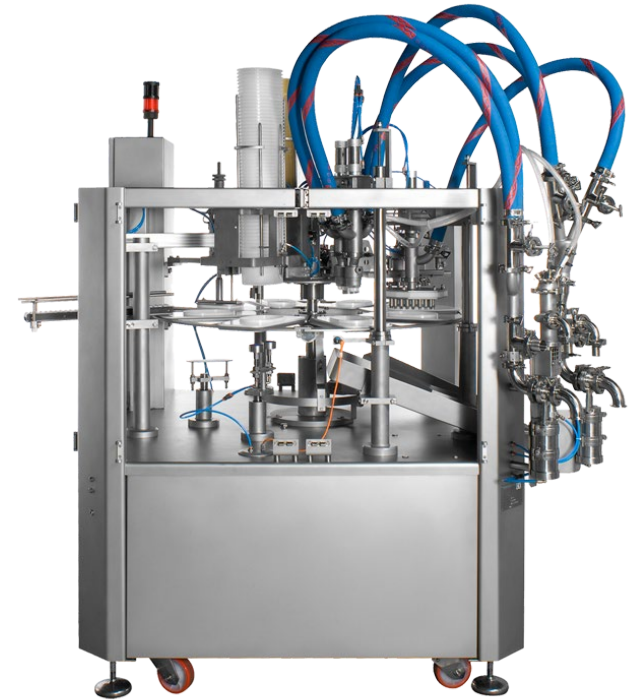
Compact 1 lane rotary filling machines

CAF 24:

- for medium and large size cups and tubs.
 - Rotary table with 6 equipment positions.

CAF 36:

- for small cups, cones and squeeze up.
 - Rotary table with 12 equipment positions.
 - Wide possibilities for different filling patterns.
 - Ripple nozzle, rotating nozzle, windmill pattern.



Model

Cones

Cups

Squeeze-up

Bulk/Tub

CAF 24
CAF 36

N/A
700-3600 pcs/h

N/A
700-3600 pcs/h

N/A
400-2100 pcs/h

400-2400 pcs/h
N/A

RUF filling machine

Rotary machine for medium and larger capacities

- Rotary table with up to 10 equipment positions.
- Robust design.
- Versatile machine with easy and short change over.
- Wide range of production equipment and accessories.
- Easy addition of new working station.
- For cones, small cups and squeeze up the configuration can be in 2 or 2+2 lanes.
- For larger cups and bulks the configuration can be in 1 or 2 lanes.



Cones

7.680 pcs/h



Cups

9.600 pcs/h



Squeeze-up

8.400 pcs/h



Bulk/Tub

4.200 pcs/h

Model

RUF

GMF-C filling machine

Compact in-line filling machine for medium and larger capacities

- Configuration for cones, cups, squeeze up and bulk.
- Electrical cabinet integrated in top part of the frame.
- Vertical movement of production equipment by servo. Ensuring precision, easy control and easier maintenance.
- Highly flexible machine with wide possibilities for different filling types and product configurations.
- Quick product change over.



Model

Cones

Cups

Squeeze-up

Bulk/Tub

GMF-C

Up to 19.800 pcs/h

Up to 19.800 pcs/h

Up to 13.200 pcs/h

Up to 7.200 pcs/h

GMF-C Heat seal

Up to 14.400 pcs/h

Up to 14.400 pcs/h

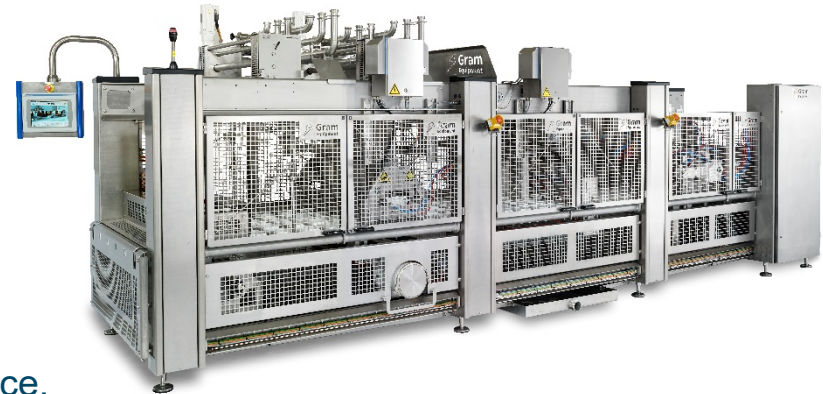
Up to 9.600 pcs/h

Up to 6.300 pcs/h

Flexline filling machine

Flexline

- Modular and highly versatile in-line filling machine for larger capacities.
- Configuration for cones, cups, squeeze up and bulk.
- Robust and sanitary design.
- Vertical movement of production equipment by servo.
- Ensuring accuracy, easy control and easier maintenance.
- Highly flexible machine with possibility for extension to add new equipment and product configurations.
- Mounting bars along machine for positioning.
- Quick product change over.



Model

Cones

Cups

Squeeze-up

Bulk/Tub

Flexline

Up to 43.000 pcs/h

Up to 43.000 pcs/h

Up to 25.000 pcs/h

Up to 12.000 pcs/h

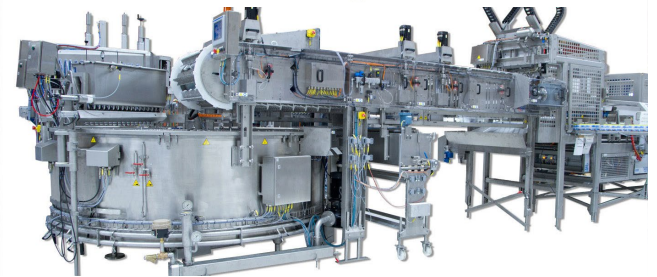
RIA – rotary molded stick machines

RIA 4

- Compact molded stick machine for smaller capacities.
- Full configuration with fillers, stick inserter etc.

RIA 8 and 14

- Molded stick machines for medium and larger capacities.
- Robust design and long proven best in class line.
- Possibility for wide range of configurations.
- Servos makes it energy efficient and enables fast change over.



Model

RIA 14
RIA 8
RIA 4

Capacity

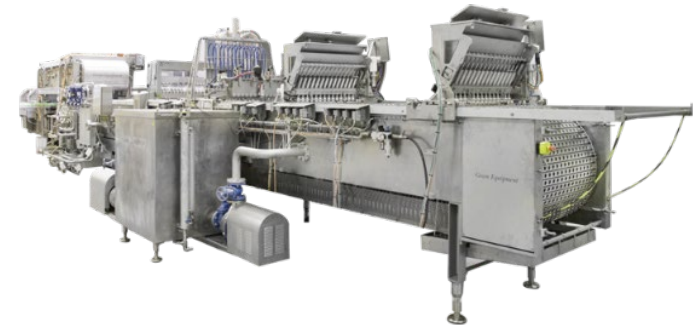
Up to 42.000 pcs/h
Up to 27.000 pcs/h
Up to 12.000 pcs/h



Polo/Versaline – in-line molded stick machines

Versaline, Polo 12/16/18

- Modern and cost effective linear molded stick machines for medium and large capacities.
- Suitable for all types of molded water ice or ice cream products.
- Ideal for multi-flavor or complex products, like layered or Product-in-Product.
- Versaline runs cascade brine system = enhanced freezing efficiency.



Model

Versaline
POLO 12
POLO 8

Capacity pcs/h (Depending on final product size and type)

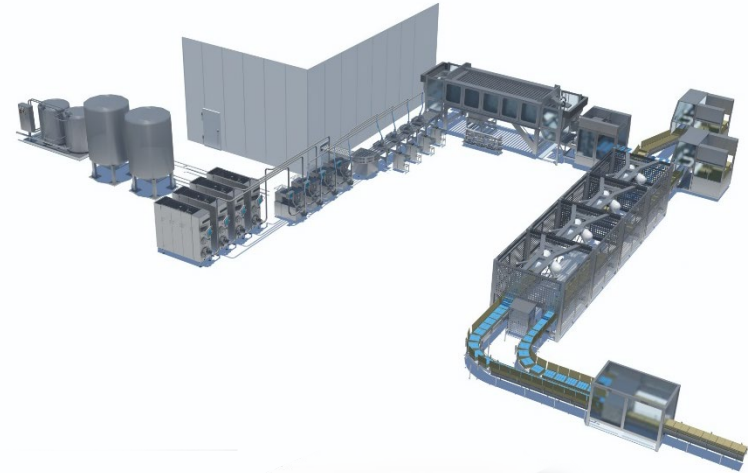
Up to 48.000 pcs/h
Up to 36.000 pcs/h
Up to 19.500 pcs/h



Extrusion lines

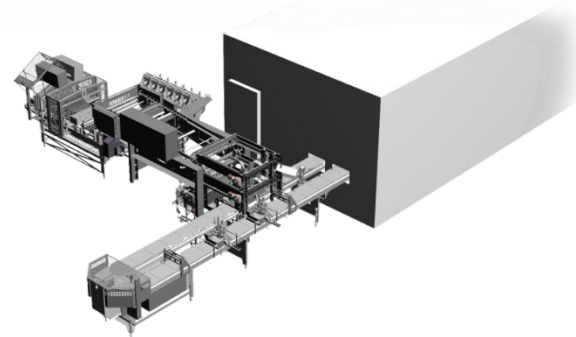
BT – high capacity

- Custom and flexible installations made to fit customer's specifications.
- Heavy duty and robust construction.
- Numerous high technology features and developments that ensure high efficiency throughout the line for minimum losses/down time.



BT-C – low/medium capacity

- More compact and fixed solution.
- Based on the well know BT technology.
- Wide range of product possibilities in one line.
- Easy product change over with plug-and-play accessories.



Model	Stick	Ballcone	Bar	Cakes	Logs	Sandwich
BT	43.200 pcs/h	30.000 pcs/h	27.000 pcs/h	2.000 pcs/h	3.000 pcs/h	36.000 pcs/h
BT-C	20.000 pcs/h	15.000 pcs/h	12.000 pcs/h	1.400 pcs/h	1.200 pcs/h	10.000 pcs/h

Wrapping machines

GMW

- Latest technology multilane continuous wrapper for larger capacities.
- Special features like the “Pro-Cut” knife to minimize stoppage and waste.
- Modular units and 1-fastner system for easy, swift maintenance.

HSW

- Versatile multilane for larger capacities.
- Flexible configurations for different number of rows, center distance etc.

SLW

- Single lane wrapper for lower capacities and simple solutions.



Model

Capacity

GMW - Continuous flow wrapper

Up to 80 strokes/min – 12 lanes

HSW

Up to 25 strokes/min – 28 lanes

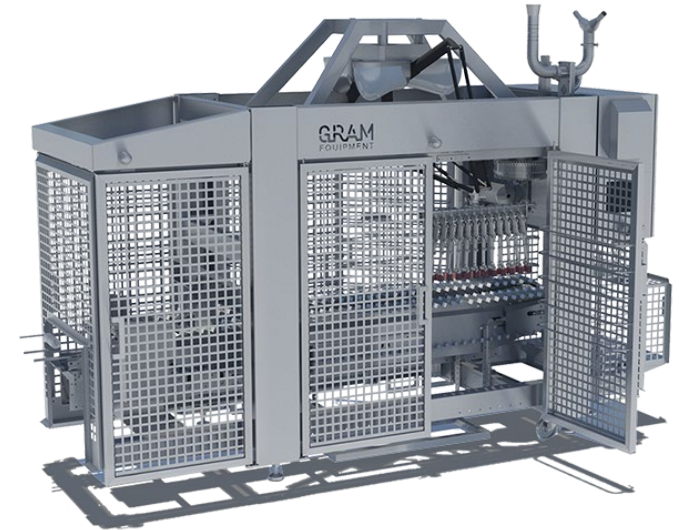
SLW

UP to 200 strokes/min – 1 lane

End Of Line

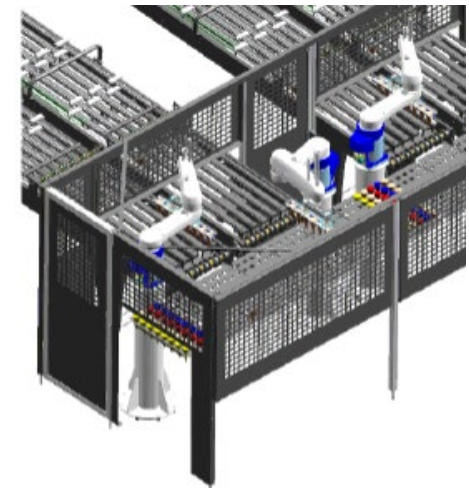
GCS

- Improve production performance, efficiency, flexibility, and reliability with Delta robots and multi-flavour packs.
- Handles stick (flat or upright), sandwich or cone products.
- Simultaneous production of different pack patterns (SKU's).
- Easy change between SKU's.
- Automatic balancing of different product flavors.



SAM & Scara Robots

- Latest technology industrial robots for versatile product handling.
- Specially designed grippers.
- Less maintenance, lower weight.
- Various configurations of the robots depending on line type, pack pattern possibilities etc.



Stand alone equipment

Sandwich machine

- All-around machine for full sandwich production.
- Both round, square and rectangular products.
- Easy format change over.
- Complete with single lane wrapper

Capacity up to 7200 pcs/h.

- Depending on final product size and biscuit type.

LIFE 2.5D unit

- For extruding/cutting of product with large and hard inclusions.
- Nut, chocolate pieces, hard candy, cookies etc.
- 3D stamping furthermore possible.
- Complete stand-alone unit mounted frame with wheels.
- Including stick inserter and aligner.
- Adapted onto new or existing lines.



Stand alone equipment

Stick Inserters

- Fit onto any existing molded stick machine.
- Screw/Finger stacker to be chosen for gentle stick handling.
- Handles wide variety of stick types.
- Ergonomic and easy access to magazine and stick bows.
- Capacity up to 200 sticks/minute.
- Depending on final size and type.



Bottom-Up Filler

- Extrusion type ice cream in a molded stick line.
- Filling with large inclusion and achieving even distribution.
- Facilitates product innovation with new pattern possibilities due to the high viscosity.
- New patterns at very low investment.
- Retrofit on any existing molded stick machine.



For further information

please do not hesitate to contact:

Head office

Nordages 2-6
6000 Kolding - Denmark
Tel.: +45 73 20 17 00
Fax: +45 73 20 17 01
info@gram-equipment.com

USA

Gram Equipment of America Inc.
One South Gold Drive
Hamilton, New Jersey 08691
Tel.: +1 609 981 7610
Fax: +1 609 438 9847
sales@gram-equipment.com

Italy

Milan office
via Einaudi 8
20068 Peschiera Borromeo
Mi Italy
Tel.: +39-02-66307120
Fax.: +39 02 6150926

China

Gram Equipment Trading, (Shanghai) Co. Ltd.
3/F, #139 Ruijin Rd. (No. 1)
Hangpu District
Shanghai, 200020, China
Tel.: +86 21 6125 0681
Fax.: +86 21 6110 8318
sales@gram-equipment.com